

Bi-Ni (Bismuth-Nickel)

H. Okamoto

The Bi-Ni phase diagram in [Massalski2] was redrawn from [1985Nas]. Since then, new experimental phase boundary data were reported by [1988Fes] and [2005Vas].

Figure 1 shows the Bi-Ni phase diagram thermodynamically assessed by [2005Vas].

of *Binary Nickel Alloys*, P. Nash (Ed.) ASM International, Materials Park, OH, p 47-49

1988Fes: P. Feschotte and J.M. Rosset, Phase Equilibria in the Binary Nickel-Bismuth System, *J. Less-Common Met.*, 1988, **143**, p 31-37 in French

2005Vas: G.P. Vassilev, X.J. Liu, and K. Ishida, Experimental Studies and Thermodynamic Optimization of the Ni-Bi System, *J. Phase Equilib. Diffusion*, 2005, **26**(2), p 161-168

References

1985Nas: P. Nash, The Bi-Ni (Bismuth-Nickel) System, *Bull. Alloy Phase Diagrams*, 1985, **6**(4), p 345-347; *Phase Diagrams*

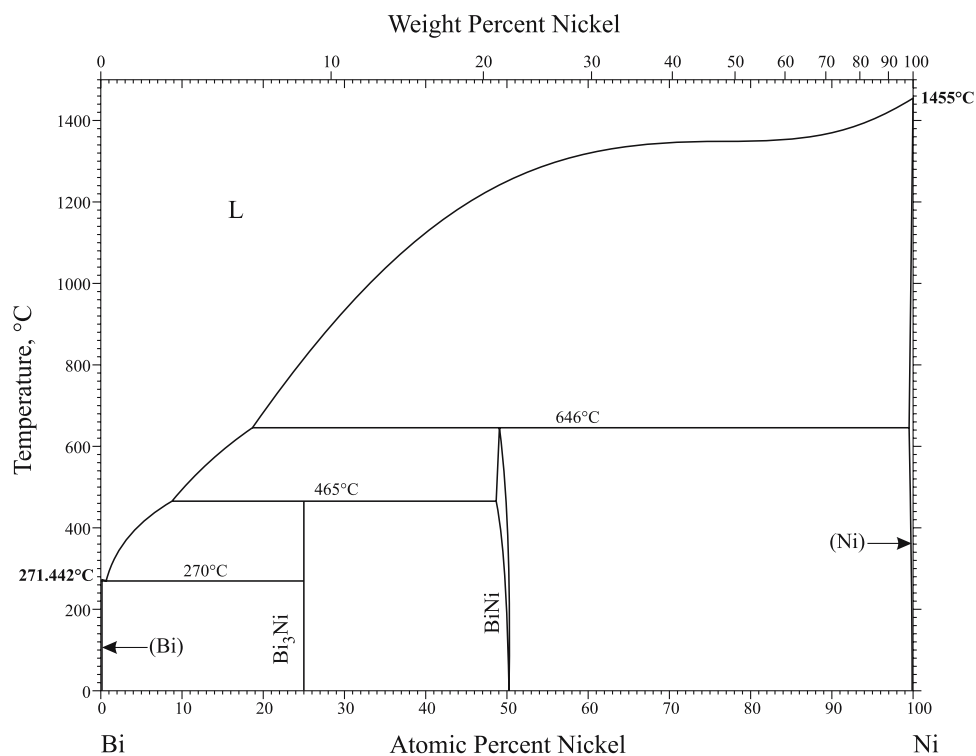


Fig. 1 Bi-Ni phase diagram